

For a **FREE QUOTE**
Call Mark Hedrick
owner of



141 Sierra Drive Rochester, NY 14616

585-233-1387

Fax: 866-238-9296

www.MASTERPIECErad.com

info@MASTERPIECErad.com



ALL METALWORKS
Authorized reseller



Customer satisfaction is our #1 priority.



mp15-069 8/15



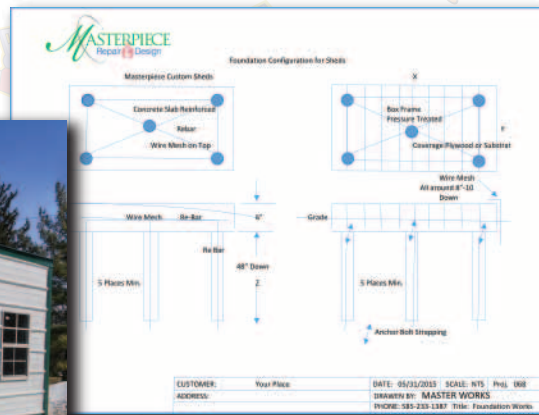
Introducing: Custom Sheds by Masterpiece Repair & Design



Residential | Industrial | Warehouse | Business | Office | Rentals
Electrical • Plumbing • Construction

Custom Sheds By Masterpiece Repair & Design:

- Constructed using premium-grade steel exteriors
- Provide plenty of storage space to organize
- Functional and attractive
- Come in many different styles and sizes
- Add value to your property
- Allow you to use your garage again!



Need More Space?

- We build custom structure and Pole-Barns to client specs
- Ask us about the details*



Are you a
"Do It Yourself"



Structural Options Include:

- Overhead doors and/or Standard Man-door
- Windows
- Translucent Roof Panels for more light

Foundation Options Include:

- No-Foundation, Shed built on level-soil.*
- Galvanized Steel
- 6-inch stone base (leveled), Includes base & 5 anchors.*
- 4-foot deep Pier construction foundation, Includes base & 5 anchors.*
- 6-inch-Full Concrete Slab, Re-Bar & Mesh Reinforced. Aprons optional.

Size Options Include:

- 8' x 8', 8' x 12', 8' x 16', 10' x 12' 12' x 16' and up...
- Custom Size and structures to fit your custom needs
- Roof Panels for skylights

Floor Options Include:

- 3/4-Inch or 1-Inch Plywood
- Pressure-treated Plywood
- Fire-retardant Plywood
- Concrete

Other Popular Options Include:

- Overhead doors
- Standard Man-door (36", 42" or 48")
- Wire for Electricity (overhead or underground)
- Plumb for water, including drain back to avoid winter line-freeze
- Ramps
- Railing
- Locks



* Some restrictions apply